

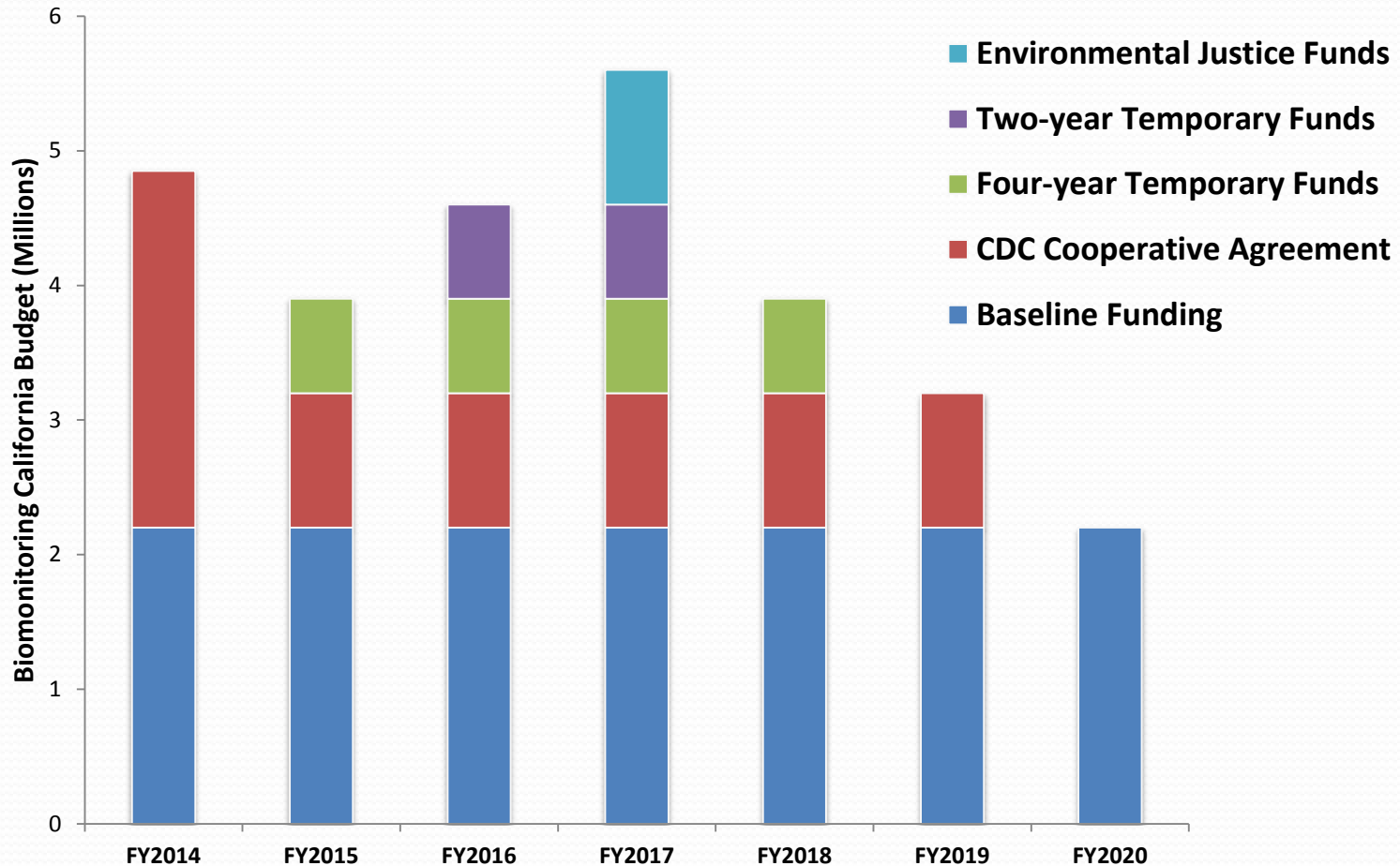
Program News and Updates

Nerissa Wu, MPH, PhD
California Department of Public Health

Presentation to the Scientific Guidance Panel Meeting
March 2018 – Davis, CA



Program Budget



*Program budget was supplemented through the Budget Change Proposal (BCP) process as a temporary measure following the 2014 reduction in CDC funding.

Northern California Firefighter Study

- Collaboration with UC Berkeley, Commonwealth, and the San Francisco Firefighters Cancer Prevention Foundation
- Samples collected from San Francisco, Santa Rosa, and Santa Clara firefighters (n=180)
- Analysis for metals and POPs currently planned; additional panels to be included as feasible



East Bay Diesel Project - Update

- Received IRB approval in November 2017
- Actively recruiting participants with West Oakland Environmental Indicators Project
- Tabling at various organizations:
 - Native American Health Center
 - East Oakland Boxing Association
 - Richmond WIC (Women, Infants & Children program)
- Conducting home visits and collecting samples from enrolled parent-child pairs



West Oakland
Environmental
Indicators Project



CARE Study

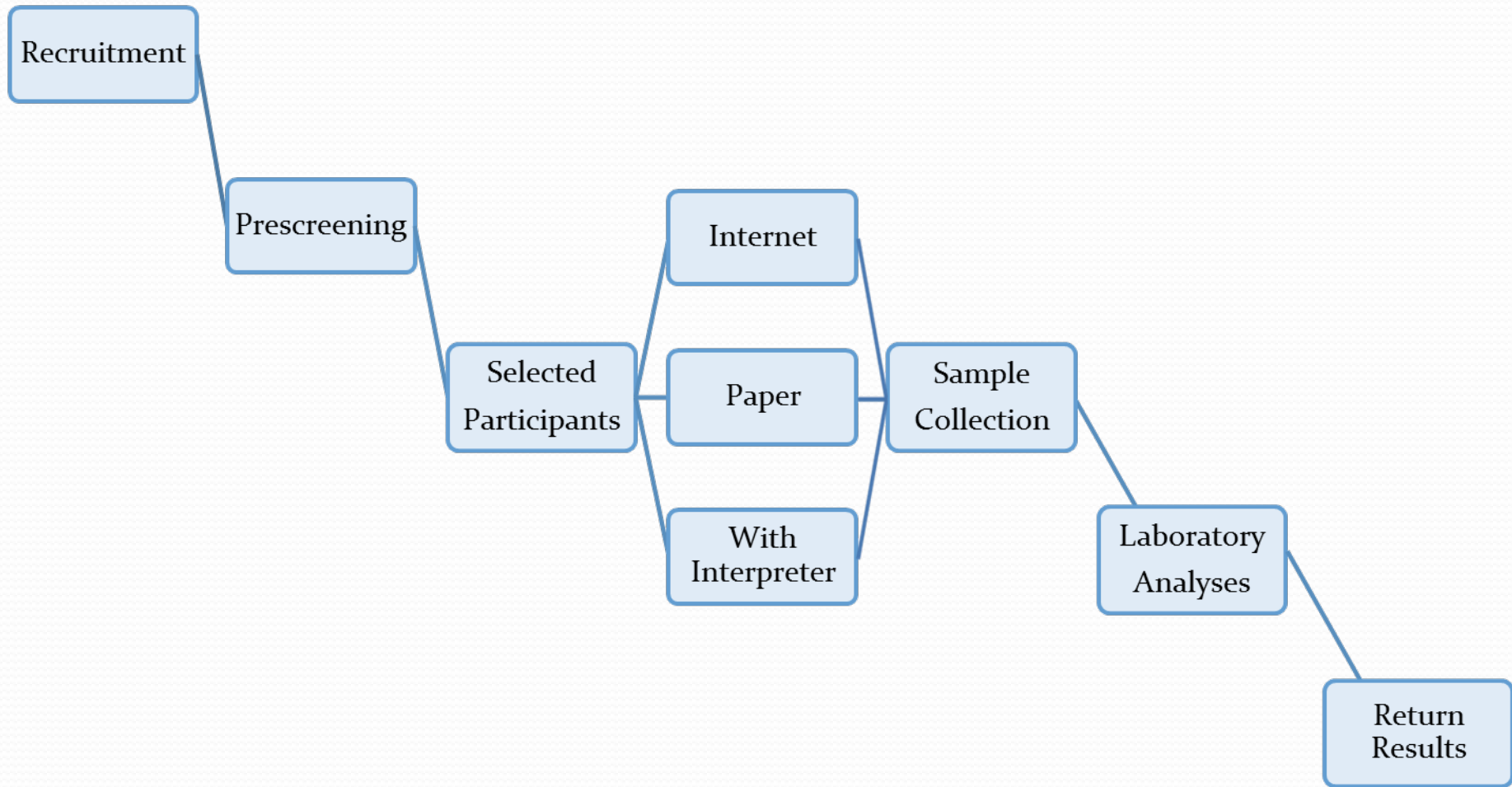
LA



The California Regional Exposure (CARE) Study

- Eight regions, based on geography and population
- Conduct sampling in approximately one region/year, with 300-500 participants per region
- Biomonitoring for metals and per- and polyfluoroalkyl substances (PFASs) and collection of exposure data
- Region 1 will include analysis for 1-nitropyrene for 150 samples, with the potential to include additional panels





The CARE Study participant flow

CARE Study recruitment postcard



Are there chemicals in your body that could harm your health?

Learn more by joining the CARE Study.

www.cdph.ca.gov/CARE

(415) 265-6029

(Monday – Friday, 8AM–6PM)

¿Hay sustancias químicas en su cuerpo que podrían dañar su salud?

Obtenga más información uniéndose al estudio de Exposición Regional en California (California Regional Exposure, o CARE, por sus siglas en inglés).

Trong cơ thể quý vị có những hóa chất có thể làm tổn hại sức khỏe của quý vị không?

Hãy tìm hiểu thêm bằng cách tham gia Nghiên Cứu CARE.

건강을 해칠 수 있는 화학 물질들이 내 몸 안에 있을까요?

CARE 연구에 참여하여 자세히 알아보십시오.

Содержатся ли в Вашем организме химические элементы, которые могут нанести вред Вашему здоровью?

Если Вы хотите узнать больше, больше об этом, примите участие в исследовании CARE.

Mayroon bang mga kemikal sa iyong katawan na maaaring makasama sa iyong kalusugan?

Alamin pa sa pamamagitan ng pagsali sa CARE Study.

您的體內是否存在(着可)能損害您健康的化學物質?

加入CARE研究,即可瞭解更多資訊。

健康に害をなす体内の化学物質

興味のある方は、CARE Studyにご参加ください

آیا مواد شیمیائی مضر برای سلامتی در بدن شما وجود دارند؟

شهوژپ هب نتسویپ اب CARE می توانید اطلاعات بیشتری بدست بیاورید.

Արդյո՞ք Ձեր մարմնում կան քիմիական նյութեր, որոնք կարող են վնաս հասցնել Ձեր առողջությանը:

Ավելին իմացե՛ք՝ միանալով CARE ուսումնասիրությանը:

From selection to sample collection:

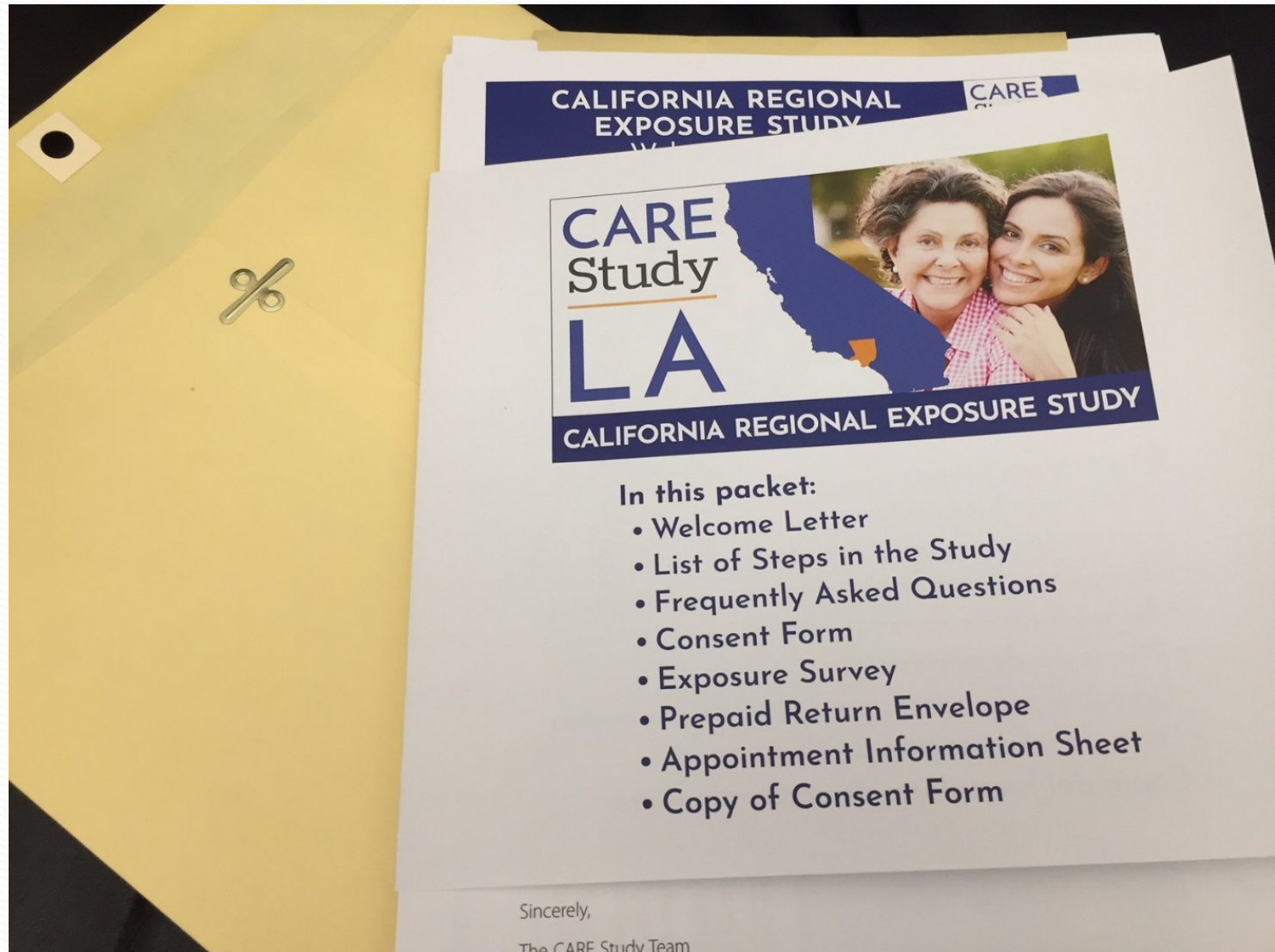
Paper participants

- Mailed packet
- Fill out consent form and exposure survey
- Staff receive and review
- Call to schedule appointment
- Call with appointment reminders

Internet participants

- Emailed invitation
- Complete consent form and exposure survey and make an appointment on line
- Automated reminders

CARE Study: Participant packets



CARE Study: Invitation for internet-based participation



Dear Jane Doe

Thank you for your interest in the CARE study. You have been selected to represent Los Angeles in this statewide study. This is an opportunity for you to find out the levels of lead, mercury, arsenic, and other chemicals that may be in your body. You will also receive recommendations on how you can reduce your contact with these chemicals.

Your first step will be to enroll in the CARE Study by [logging into your account](#) and:

1. Submit the Consent Form
2. Fill out a 10-minute online survey
3. Schedule an appointment to give your blood and urine samples at a location near you

Enrolling in CARE will take you about 20-30 minutes.

At your appointment, our licensed phlebotomist will collect a small amount of blood—no more than you would give at a doctor's visit. You do not

CARE Study: Initial login

CALIFORNIA REGIONAL
EXPOSURE STUDY

CARE
Study
LA



[My Profile](#)

[Sign Out](#)

Hello Jane Doe.

Welcome to your CARE study account.

Through this account you will:

- **Sign the consent form**
- **Take a survey**
- **Schedule your appointment**

You can update your contact information at any time by clicking the My Profile button.

Click the available button to get started

Step 1
Sign the consent form

Status: **Not Completed**

Step 2
Take a survey

Status: **Not Completed**

Step 1: Consent form

DocuSign Envelope ID: B7A52006-3E47-433F-B353-0D6F3F7F44EC

CALIFORNIA REGIONAL EXPOSURE STUDY Consent Form



CONSENT TO PARTICIPATE IN A RESEARCH STUDY

You have been selected to participate in this research study. Participation is voluntary.

Please read the information below before signing.

Study Title: California Regional Exposure (CARE) Study

Principal Investigator: Dr. Nerissa Wu

Research organization: Biomonitoring California

What is the purpose of this study?

The purpose of the California Regional Exposure (CARE) Study is to measure some of the potentially harmful chemicals in people's bodies and learn how people are exposed (come into contact with) these chemicals. The study will also provide important information to communities and policymakers across California in their efforts to reduce chemical exposure and improve public health.

Biomonitoring California will be measuring selected chemicals, including lead and mercury,

Step 2: Exposure survey

CALIFORNIA REGIONAL
EXPOSURE STUDY



[My Profile](#)

[Sign Out](#)

Hello Jane Doe.

Welcome to your CARE study account.

Through this account you will:

- **Sign the consent form**
- **Take a survey**
- **Schedule your appointment**

You can update your contact information at any time by clicking the My Profile button.

Click the available button to get started

Step 1
Sign the consent form

Status: **Completed**

Step 2
Take a survey

Status: **Not Completed**

Step 3: Schedule an appointment

Welcome to your CARE study account.

Through this account you will:

- **Sign the consent form**
- **Take a survey**
- **Schedule your appointment**

You can update your contact information at any time by clicking the My Profile button.

Click the available button to get started

Step 1
Sign the consent form

Status: **Completed**

Step 2
Take a survey

Status: **Completed**

Step 3
Schedule your appointment

Status: **Not Completed**

Select a sample collection site

CALIFORNIA REGIONAL
EXPOSURE STUDY

CARE
Study
LA



My Profile

Sign Out

Schedule your appointment

Select a location to show available appointments:

- 2/23 - 1125 N McCadden Pl., Room 135 Los Angeles CA 90038
- 2/24 - 9900 S. Vermont Ave. Los Angeles CA 90044
- 2/26 - 8133 Vineland Ave. Sun Valley CA 91352
- 2/27 - 5857 S. Central Ave., Suite 180 Los Angeles CA 90011
- 2/28 - 1617 Broadway, Second Floor Santa Monica CA 90404
- 3/2 - 3320 W Adams Blvd. Los Angeles CA 90018
- 3/3 - 8015 S Sepulveda Blvd. Westchester CA 90045
- 3/5 - 5027 Caspar Ave. Los Angeles CA 90041
- 3/8 - 245 1/2 W Elm Burbank CA 91502
- 3/9 - 245 1/2 W Elm Ave. Burbank CA 91502
- 3/12 - 12006 Venice Blvd. Los Angeles CA 90066
- 3/13 - 13520 Van Nuys Blvd. Pacoima CA 91331
- 3/14 - 12511 Moorpark Street Studio City CA 91604
- 3/17 - 2900 W Sepulveda Blvd. Torrance CA 90505

Schedule

For accommodations, click [here](#), and a CARE Study staff member will call you to help set up an

Schedule your appointment

CALIFORNIA REGIONAL
EXPOSURE STUDY

CARE
Study
LA



My Profile

Sign Out

Schedule your appointment

Select a location to show available appointments:

3/8 - 245 1/2 W Elm Burbank CA 91502

Showing appointments for:

245 1/2 W Elm Burbank CA 91502

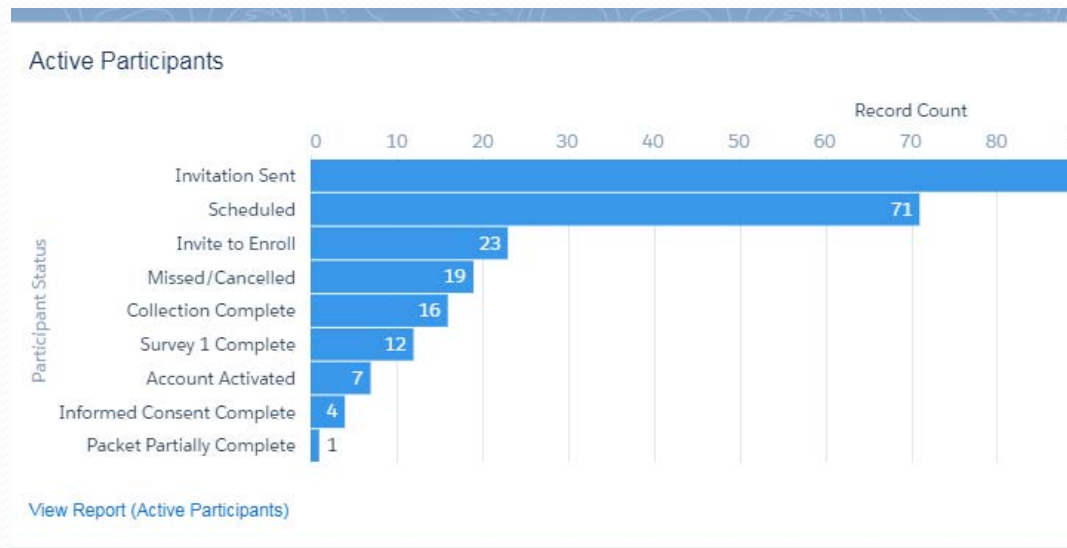
- | | | |
|-----------------------|----------------------|--------------------------|
| <input type="radio"/> | 8:00 AM to 8:20 AM | Thursday, March 08, 2018 |
| <input type="radio"/> | 8:00 AM to 8:20 AM | Thursday, March 08, 2018 |
| <input type="radio"/> | 8:20 AM to 8:40 AM | Thursday, March 08, 2018 |
| <input type="radio"/> | 8:20 AM to 8:40 AM | Thursday, March 08, 2018 |
| <input type="radio"/> | 8:40 AM to 9:00 AM | Thursday, March 08, 2018 |
| <input type="radio"/> | 8:40 AM to 9:00 AM | Thursday, March 08, 2018 |
| <input type="radio"/> | 9:00 AM to 9:20 AM | Thursday, March 08, 2018 |
| <input type="radio"/> | 9:00 AM to 9:20 AM | Thursday, March 08, 2018 |
| <input type="radio"/> | 9:20 AM to 9:40 AM | Thursday, March 08, 2018 |
| <input type="radio"/> | 9:20 AM to 9:40 AM | Thursday, March 08, 2018 |
| <input type="radio"/> | 9:40 AM to 10:00 AM | Thursday, March 08, 2018 |
| <input type="radio"/> | 9:40 AM to 10:00 AM | Thursday, March 08, 2018 |
| <input type="radio"/> | 10:00 AM to 10:20 AM | Thursday, March 08, 2018 |



This appointment is at a private home (Airbnb).

CARE Study: Participant tracking

- Track status of individual participants
- Schedule tasks and reminders
- Evaluate participant process flow
- Monitor sample collection and management
- Anticipate study logistical needs



CARE Study: Recruitment status

- Postcards were sent to 65,000 households across LA County
- 158 individuals listed the mailed postcard as their source of information (0.24%)
- Top recruitment methods:
 - Postcard
 - Targeted outreach
 - Craigslist

Participant selection

- Participants are selected from the prescreening pool on a rolling basis
- Selection takes sex, race/ethnicity, and home address into account
- Enrollment rate (as of Feb 27)

	Internet Participants	Paper Participants	Total
Invited Participants	215	102	317
Account Activated/Enrolled	141	38	179
	66%	37%	56%

CARE Study: Where are we now?

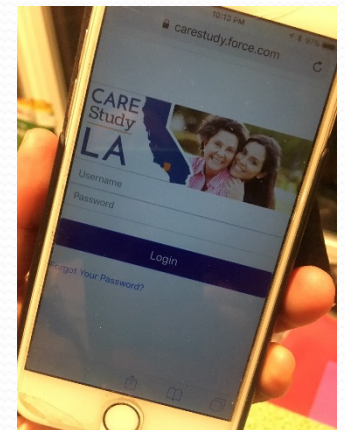
- 526 eligible people have filled out the prescreening survey
- 317 people have been invited to participate
- 179 people have activated their on-line account or mailed back the consent form
 - 15 are in the process of completing enrollment
 - 98 have completed enrollment and have scheduled appointments
 - 51 participants have provided samples
 - 14 people have withdrawn from study or missed appointment

*As of February 27.



CARE Study: Lessons learned (so far)

- More recruitment into the prescreening pool is needed
- Approximately 30% of respondents opted to receive study materials on paper
- Response and completion rates are better for internet participants
- Once enrolled, participant drop-out rate is low



Projected timeline

Task	Timeline
Early notification – elevated metals levels	May – September 2018
Complete field work: Region 1	June 2018
Results return packets	September – December 2018
Outreach to Region 2: Inland Valley (Inyo, San Bernardino, Imperial, and Riverside Counties)	July – December 2018
Initial field work: Region 2	January 2019

Biomonitoring California Staff

Kathleen Attfield

Judy Balmin

Lauren Baehner

Hyoung Gee Baek

Russ Bartlett

Paramjit Behniwal

Reber Brown

Key-Young Choe

Robin Christensen

Sabrina Crispo Smith

Adam D'Amico

Josephine DeGuzman

Amy Dunn

Jeff Fowles

Ryszard Gajek

Qi Gavin

Songmei Gao

Elizabeth Hall

Sara Hoover

Shoba Iyer

Duyen Kauffman

Juliet Kinyua

Ying Li

Jennifer Mann

June-Soo Park

Julian Perez

Myrto Petreas

Martha Sandy

Jianwen She

Dan Sultana

Karyn Taylor

Juan VillaRomero

Jed Waldman

Miaomiao Wang

Yunzhu Wang

Suzanne Wittwer

Nerissa Wu

Greg Yeh

Lei Zhang

Jun Qiang Zhou