

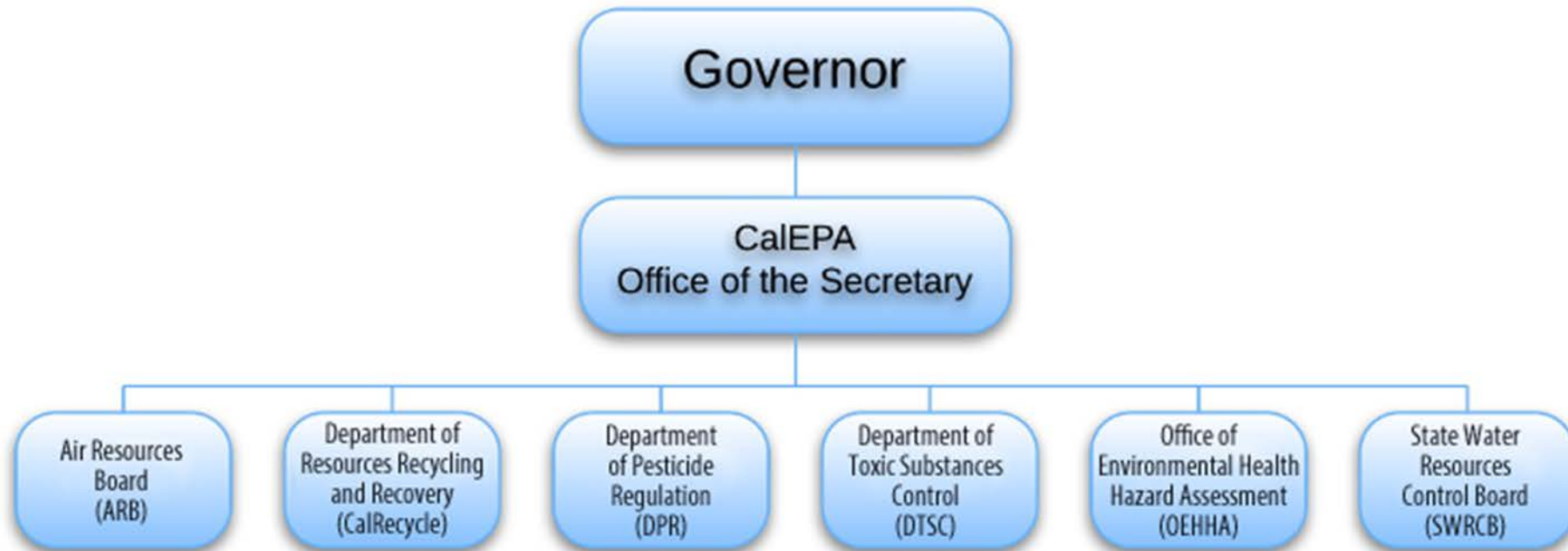


Yana Garcia
Assistant Secretary for
Environmental Justice
and Tribal Affairs



Biomonitoring California, Scientific Guidance Panel Meeting
March 2, 2018
Davis, California

CALIFORNIA ENVIRONMENTAL PROTECTION AGENCY



ENVIRONMENTAL ISSUES OF INTEREST

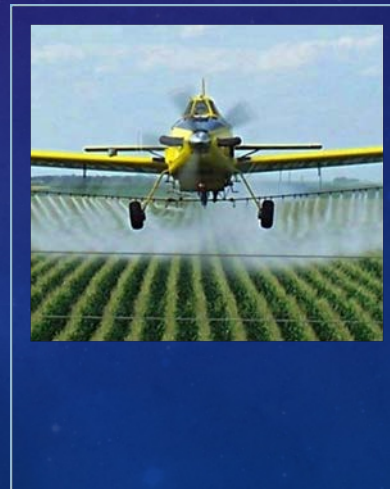
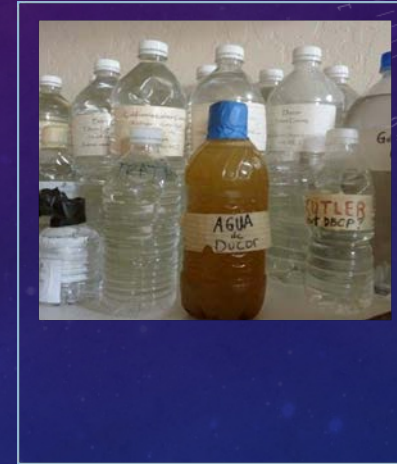
MOST COMMON:

- **AIR QUALITY (73%)**
- WATER QUALITY (63%)
- AGRICULTURE/PESTICIDES (56%)

64 Individuals

48 Organizations

8 Regions



COMMON RECOMMENDATIONS: RESEARCH AND METHODS

- To use community-based participatory methods in studies;
- To add more chemicals to the CARE Study; and
- To consider studies that will lead to *POLICY change*.

AB 617 (C. GARCIA). NONVEHICULAR AIR POLLUTION: CRITERIA AIR POLLUTANTS AND TOXIC AIR CONTAMINANTS

(H&S CODE, SECTIONS 40920.6, 42400, 42402, 39607.1, 40920.8, 42411, 42705.5, 44391.2.)

1. Develop and maintain an emissions Inventory for criteria air pollutants and toxic air contaminants
2. By October 1, 2018
 - a. Prepare a monitoring plan regarding technologies for monitoring criteria air pollutants and toxic air contaminants, and the need for and benefits of additional community air monitoring systems to be implemented and maintained by the Air Districts
 - b. to prepare a statewide strategy to reduce emissions of toxic air contaminants and criteria pollutants in communities affected by a high cumulative exposure burden (updated every 5 years)
3. Imposes an expedited schedule for the adoption of retrofit technologies
4. Increases, by 5 fold, existing penalties for non-compliance with air pollution standards, for stationary sources.

ENVIRONMENTAL JUSTICE

The background features a dark blue gradient with a field of small white stars. On the right side, there are several circular gauges or dials with numerical scales (e.g., 100, 120, 140, 160, 180, 200) and arrows, suggesting a technical or scientific theme.

**Our Stories, and Our Perspectives,
Matter.**

- Assist in prioritizing communities for monitoring and reduction plans
 - e.g., by using data from the West Oakland DPM study and Southern California CARE study
- Equip communities with better information about health burdens that may be directly tied to air pollution by making information public
 - Support the use of this information to push for early actions by the Air Districts
- Use community-level baseline data to measure the effectiveness of existing programs and policies and/or new programs and policies
- Inform what we can and should be monitoring for as we deploy monitoring systems across the state



Yana Garcia

Assistant Secretary for Environmental Justice and Tribal Affairs

yana.garcia@calepa.ca.gov

BIOMONITORING CALIFORNIA, SCIENTIFIC GUIDANCE PANEL MEETING
MARCH 2, 2018
DAVIS, CALIFORNIA